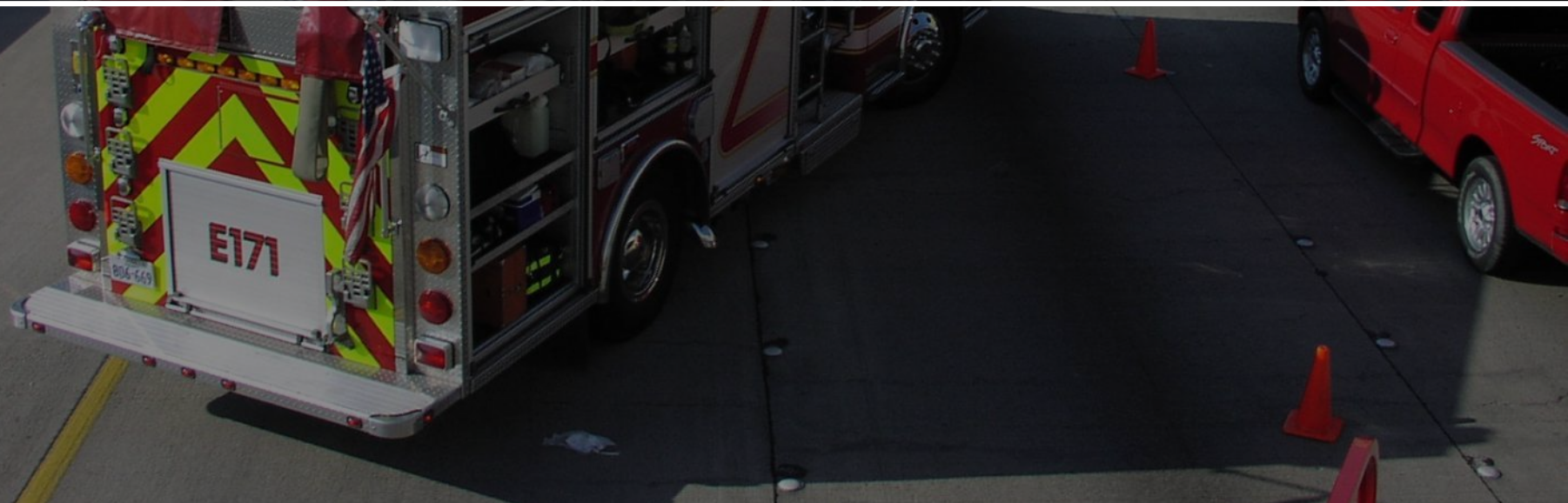




# NATIONAL TRAFFIC INCIDENT MANAGEMENT (TIM) RESPONDER TRAINING

LAW ENFORCEMENT | FIRE | EMS | TRANSPORTATION  
TOWING & RECOVERY | COMMUNICATIONS

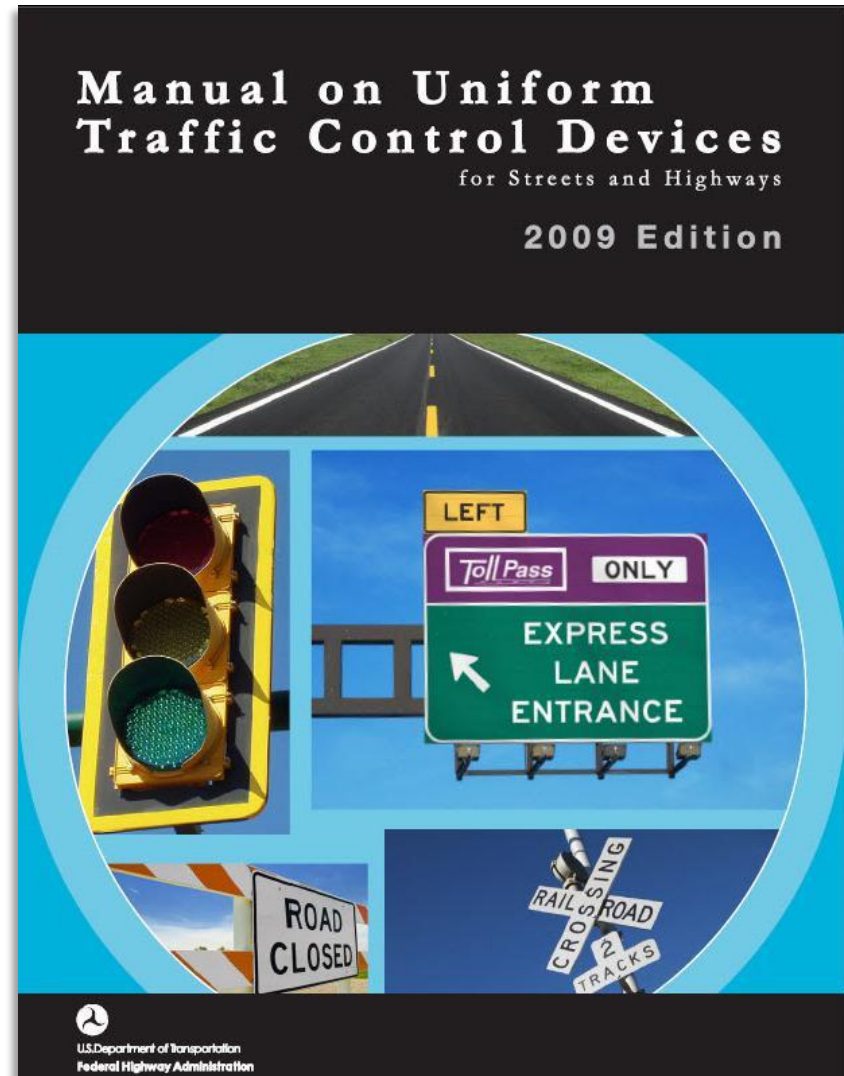


# Incident Command System (ICS)

- Standardized, on-scene, all-hazards incident management concept. (CA wildfires).
- Allows users to adopt an organizational structure for handling an incident without being hindered by jurisdictional boundaries
- Goals of ICS:
  - *Maintaining safety of responders and others*
  - Achievement of tactical objectives
  - Efficient use of resources

## Section 6I.01 – General

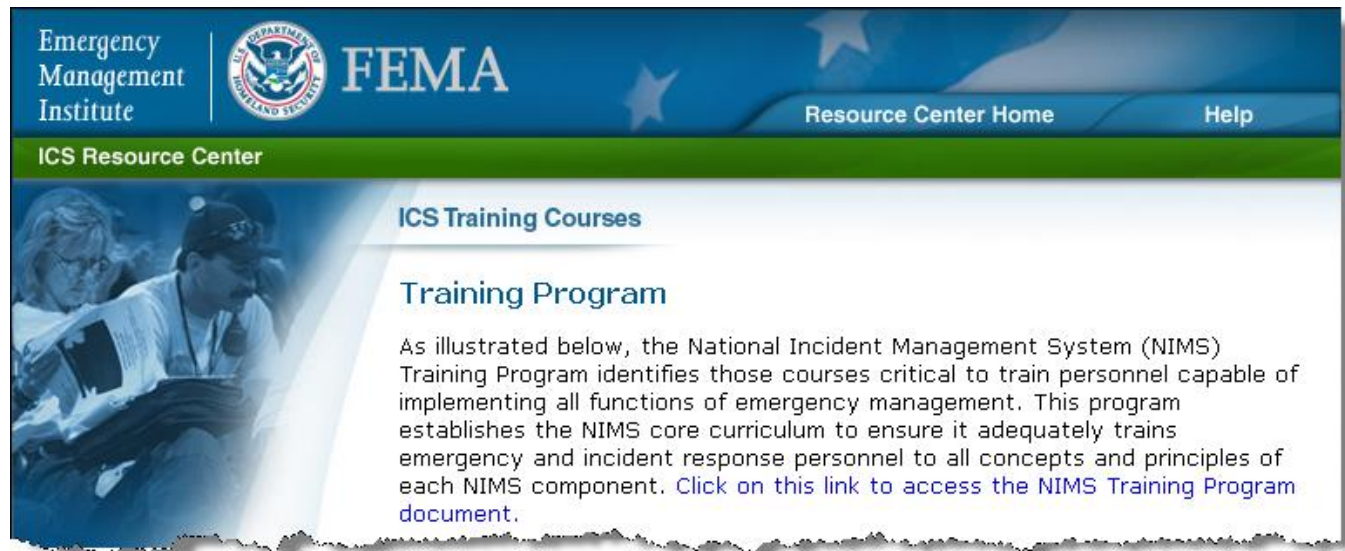
- The National Incident Management System (NIMS) requires the use of the ICS at traffic incident management scenes
- A traffic incident is an emergency road user occurrence, a natural disaster, or other unplanned event that affects or impedes the normal flow of traffic





ust St 1/2  
fe Ave 1/4  
pital Dr 3/4

- **IS 700** – NIMS, An Introduction
- **ICS 100** – Introduction to ICS
- **ICS 200** – ICS for Single Resources and Initial Action Incidents



The screenshot shows the FEMA ICS Resource Center website. The header includes the Emergency Management Institute logo, the FEMA logo, and navigation links for "Resource Center Home" and "Help". The main content area is titled "ICS Training Courses" and features a "Training Program" section. The text in this section explains the NIMS Training Program's purpose and includes a link to the NIMS Training Program document.

Emergency Management Institute

FEMA

Resource Center Home Help

ICS Resource Center

ICS Training Courses

Training Program

As illustrated below, the National Incident Management System (NIMS) Training Program identifies those courses critical to train personnel capable of implementing all functions of emergency management. This program establishes the NIMS core curriculum to ensure it adequately trains emergency and incident response personnel to all concepts and principles of each NIMS component. [Click on this link to access the NIMS Training Program document.](#)

## Single Command

- Incident Commander has complete responsibility for incident management

## Unified Command

- Utilized when incidents require multi-jurisdictional or multi-agency response
- Allows all agencies to:
  - Work together without affecting authority, responsibility or accountability
  - Manage an incident together by establishing a common set of incident objectives and strategies

# Incident Action Plan

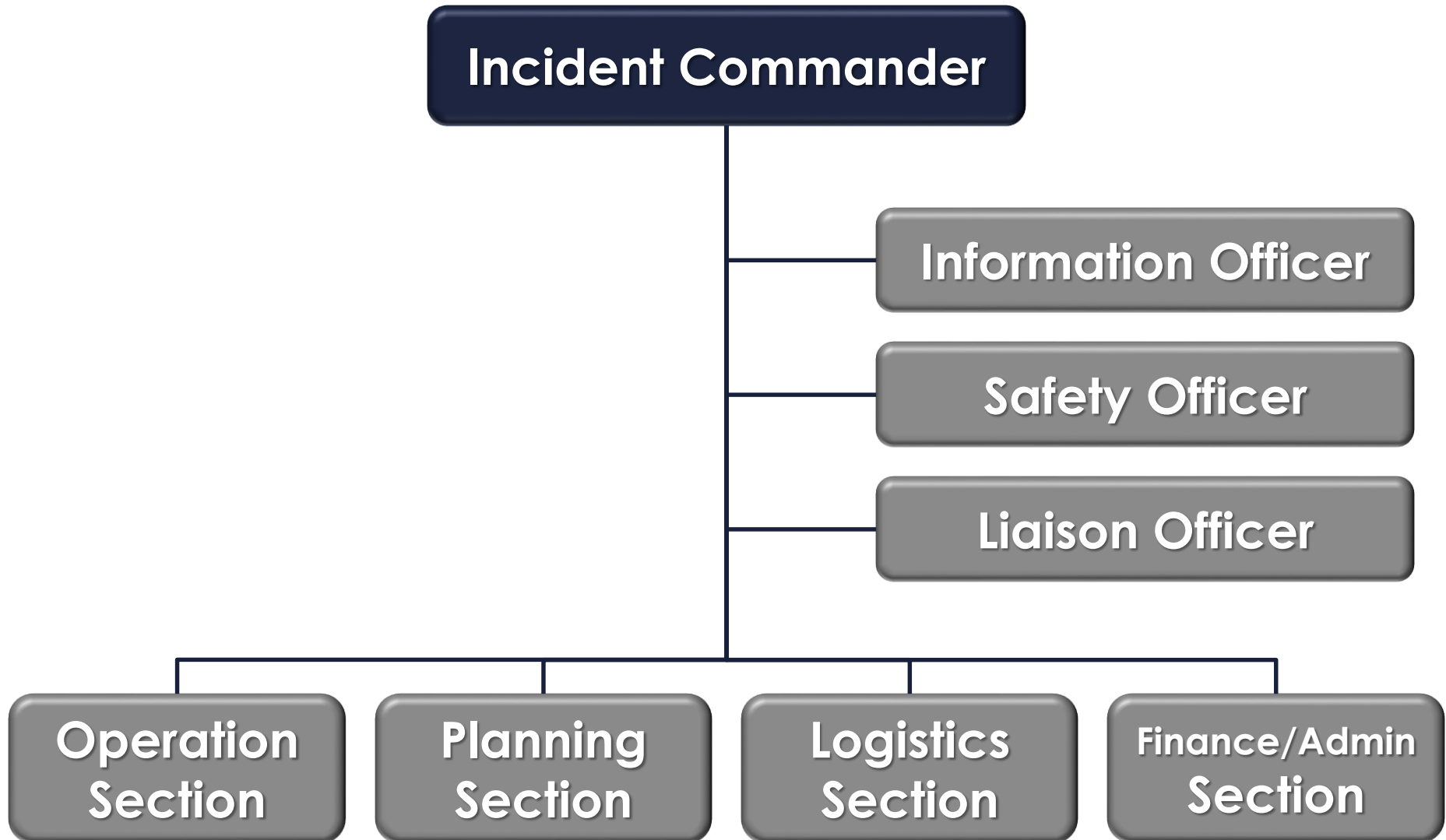
Unified Command  
must work together  
to implement an  
Incident Action Plan







# ICS General and Command Staff



# ICS for Initial Response

## Incident Commander

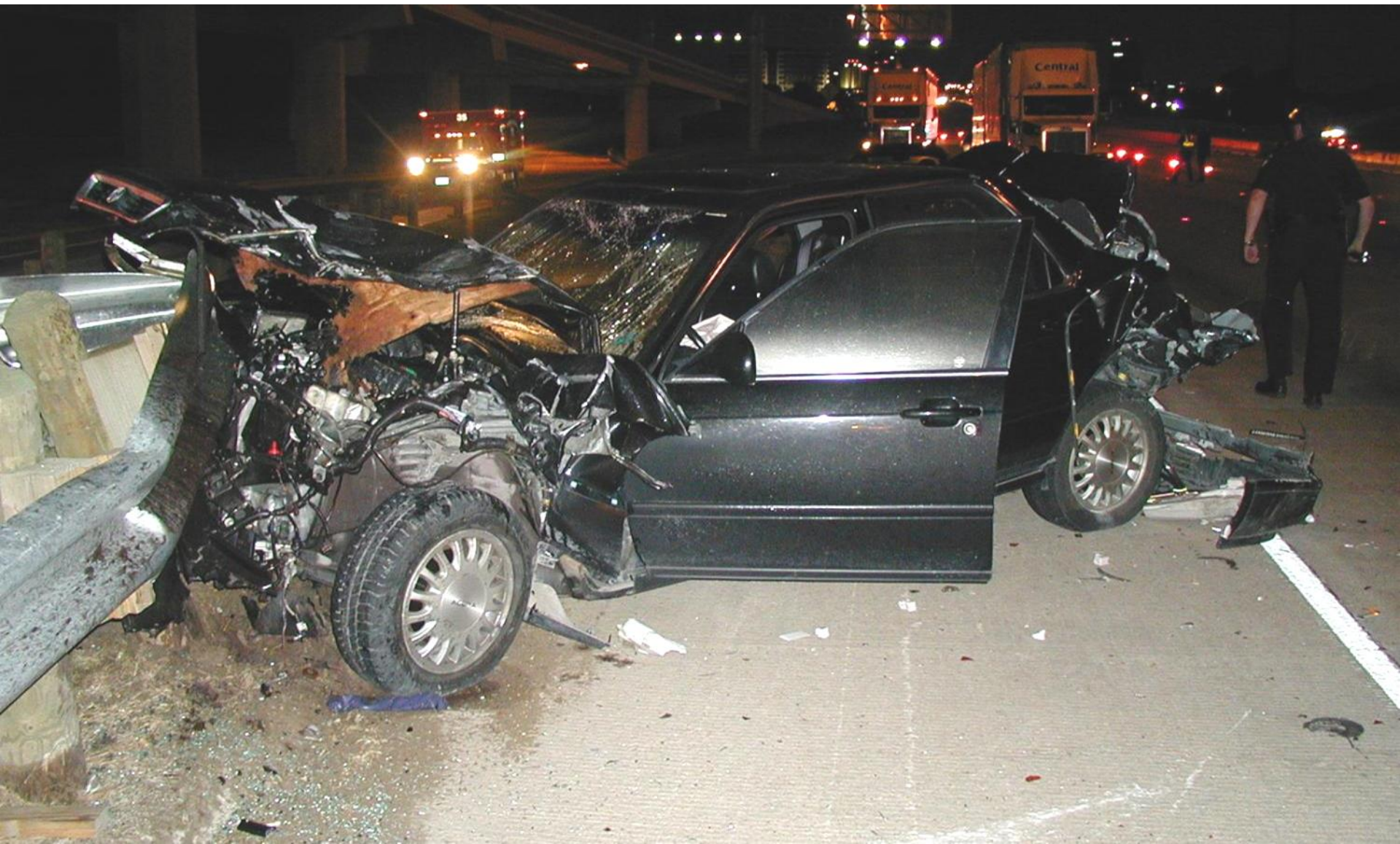
Adam 14  
City Police Officer  
Command



Engine 57  
County FD Capt  
Fire and Rescue

Ambulance 51  
Vol Rescue EMT  
EMS

Service Patrol 42  
State DOT  
Traffic Control



## **Incident Command Post (ICP)**

- The field location at which the primary tactical-level, on-scene incident command functions are performed

## **Staging Area**

- Location established where resources can be placed while awaiting a tactical assignment

# Lesson Objectives Review

1. Describe the requirements for establishing and participating in ICS
2. Describe when it is appropriate to implement Unified Command
3. Identify the need for and use of staging areas

- **End of Shift.... Let's all go home!**
- Communication
- Cooperation
- Coordination
- Questions?